

TOTAL EXPERIENCE LEARNING (TEpL): A Teaching Renaissance to Engage 21st-Century Minds

Adelle L. Schade
Stephanie J. Reisinger
Jacquelyn S. Fetrow

June 2026

A ConvergeEd White Paper Audience: *Educators, District Administrators, and Educational Policy Makers*

EXECUTIVE SUMMARY: THE SYSTEMIC CHALLENGE

The Challenge of Education in an Era of Information Abundance

The fundamental challenge facing modern education is not a lack of teacher dedication or student capability. It is a structural mismatch. The traditional model of schooling was engineered for a world that no longer exists—a world defined by information scarcity. In that legacy paradigm, the school library was the archive, the textbook was the primary source, and the teacher was the ultimate authority of knowledge. The educational objective was the acquisition and retention of facts.

Today, our students live in an era of information abundance. Facts, data, and content benchmarks are a commodity, accessible in seconds via any digital screen. Yet, legacy instructional frameworks persist. Educators are routinely handed boxed materials and canned, prescriptive curricula that focus entirely on the "**what**" of education.

This creates an exhausting, daily battle for student engagement in the classroom. When students already have the answers to factual questions at their fingertips, traditional content delivery loses its pull. The system provides the content benchmarks, but it rarely equips educators with the framework for the "**how**"—how to activate, sustain, and channel student curiosity in an age of infinite information.

Introducing Total Experience Learning (TEpL)

Developed by ConvergeEd LLC, **Total Experience Learning (TEpL)** is an instructional framework designed to resolve this friction. TEpL is not a localized curriculum or a subject-specific intervention; it is a universal instructional architecture applicable across

every discipline, every subject matter, and every grade level—from Pre-K through adult education.

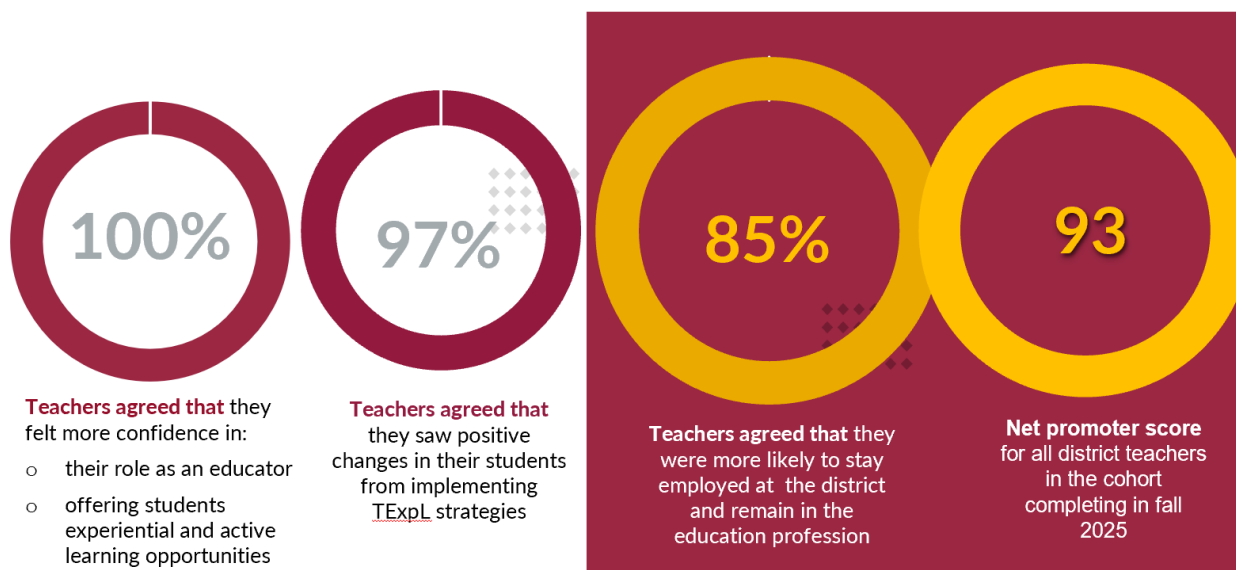
TExpL does not change what it means to learn; rather, it transforms the classroom into a dynamic ecosystem where that student engagement and learning can thrive, even in large public school classrooms. By breaking down the metaphorical and physical walls of the traditional classroom, TExpL realigns the environment around phenomena-based inquiry, cross-disciplinary problem solving, and authentic student agency, leveraging our information-rich environment.

In a TExpL classroom, the teacher shifts from the traditional "sage on the stage" to the "**classroom sherpa**," helping to guide the learning process for each student. While this shift can feel uncomfortable for some educators initially, it ultimately relieves the burden of driving engagement through sheer force of personality, replacing it with a structured framework for student-led discovery.

Evidence-Based Outcomes

This paper outlines the quantifiable impact of the TExpL framework. Backed by statistical analysis across hundreds of educators and thousands of students, TExpL has demonstrated a statistically significant capacity to elevate student engagement, dramatically increase teacher self-efficacy, and restore professional enthusiasm to the teaching craft.

Data from one school district, a five year partner of the TExpL Institute



Data from one school district who is a five-year partner of the TExpL Institute, which supported 190 teachers to complete the TExpL four-course certificate. In the landscape of professional education, a net promoter score above 50 is considered excellent.

THE TExpL ECOSYSTEM & METHODOLOGY

A Framework for Every Discipline and Grade Level

Because TExpL is an instructional framework rather than a static curriculum, its principles are universal. Whether applied to early childhood literacy, middle school laboratory science, high school mathematics, or adult professional development, the core mechanics remain identical: shifting the student from a passive consumer of information to an active investigator of phenomena.

In all TExpL educator development programs, coursework is job-embedded. Participant-educators implement strategies directly within their classrooms or leadership roles as part of the coursework, offering immediate impact.

To scale this framework across schools and districts, ConvergeEd has developed a comprehensive ecosystem of professional continuing education, certified by Middle States Association of Colleges and Schools, and aligned with continuing certification requirements for teachers in most U.S. states:

- **Foundational Mastery (Graduate Certificate):** A rigorous, four-course graduate certificate program that equips educators with the deep pedagogical theory and practical design skills required to become master TExpL architects. Current courses are in partnership with, and accredited through, Alvernia University in Reading Pennsylvania.
- **Targeted Innovation (Individual Graduate Coursework):** Specialized graduate-level courses that allow educators to explore specific pedagogical dimensions while accumulating advanced instructional credits.
- **Institutional Scaling (Professional Development & Coaching):** * *Group & Immersive Professional Development* provide intensive, interactive cohorts designed to shift building-level or district-wide culture.
- **Instructional Coaching:** One-on-one, classroom-embedded mentorship to ensure abstract concepts translate seamlessly into daily instructional habits.

Interactive, Practice-Based Professional Development

While traditional professional development often relies on lecture-style delivery, ConvergeEd models the very practices it advocates. TExpL professional development sessions are completely interactive and practice-based. Educators learn the framework by experiencing it firsthand as participants, allowing them to evaluate the methodology from the student's perspective.

Through this immersive approach, educators master high-impact, immediately implementable classroom strategies, including:

- **Thinking Partners & Collaborative Inquiry:** Structuring peer-to-peer cognitive processing.
- **Uncovering Key Vocabulary & Concepts:** Moving away from rote memorization toward contextual discovery.
- **"Notices, Wonders, and Burning Questions":** Activating student-driven inquiry frameworks.
- **Student Voice, Choice, and Discovery Tables:** Engineering tactile, self-directed learning environments.
- **Engaging Stakeholders:** Extending learning beyond the physical school building. For example, during our *"Beyond the Four Walls"* immersion day, educators collaborate directly with community institutions like **Berks Nature** and the **Reading Public Museum** (both in Reading, Pennsylvania, home to ConvergeEd and TExpL) to learn how to leverage community assets, both physically and virtually, to make learning authentic.

QUANTIFIABLE IMPACT: PROOF OF CONCEPT

To validate the efficacy of the TExpL framework, ConvergeEd maintains a continuous, data-driven evaluation model tracking both teacher performance metrics and student outcomes.

1. Empowering the Educator: Teacher Sense of Efficacy and Job Satisfaction

Student engagement cannot occur without an empowered teaching corps. To measure the psychological and professional impact on educators, ConvergeEd utilizes the standardized **Teacher Sense of Efficacy Scale (TSES)**.

Pre- and post-framework statistical analyses reveal a **dramatic, highly significant increase** in teachers' sense of efficacy across three validated domains: student engagement, classroom management, and instructional practices.

| Question Category (8 questions each) | Mean (No TExpL Experience) | Mean (Completed TExpL Graduate Certificate) | Statistical Significance (sigma, two tail) |
|---|----------------------------|---|--|
| Efficacy in Student Engagement | 7.07 | 8.16 | 6.24×10^{-13} |
| Efficacy in Instructional Strategies | 7.39 | 8.14 | 1.79×10^{-7} |
| Efficacy in Classroom Management | 7.45 | 8.30 | 1.88×10^{-9} |

157 teachers across 9 schools in a single LEA; TSES administered early Fall semester 2025

Empowering teachers rekindles the sense of joy back into their teaching. At the completion of their four-course certificate in summer 2025, 106 educators:

- 100% agree (90% strongly agree and 10% somewhat agree) with the statement: This experience has had a positive impact on my professional growth.”
- 100% agree (85% strongly agree and 15% somewhat agree) with the statement: “In this course I developed practices that I am using to encourage experiential and active learning in my classroom.”

"I found myself going outside of my normal comfort zone and have had great results in the classroom"
-Summer 2025 educator

When educators master the "how" of TExpL, they spend less energy managing behavioral compliance and more energy facilitating intellectual discovery, reigniting the reason that they entered the teaching profession. As a result, educators are less likely to leave their district or leave the profession. In spring 2025, 237 educators completed the certificate program:

- 86% agree (57% strongly agree and 29% somewhat agree) with the statement: "As a result of this four-course certificate, I am less likely to look for a position in another school district or organization.”
- 91% agree (68% strongly agree and 23% somewhat agree) with the statement: “As a result of this four-course certificate, I am less likely to look for a position outside the teaching profession.”

"Thank you for rekindling the spark in me as a teacher."
-Spring 2025 educator

Teachers know the “why” of teaching—they entered the teaching profession to inspire and engage their students. TExpL helps them to rediscover their own “why” of being a teacher.

2. Activating the Learner: Student Engagement and Satisfaction

When students are given agency and allowed to interact with real-world phenomena, student engagement ceases to be an uphill battle. Quantitative data gathered across diverse student populations consistently validates the framework's appeal and effectiveness, including:

- **Middle School Intervention:** In a cohort of 8th-grade classrooms experiencing a series of TExpL-style workshops combining fashion and environmental science (exploring natural dye techniques and the pH scale), **92% of students** expressed high satisfaction with the program.
- **Immersive Summer Programming:** In a dedicated TExpL-driven summer program encompassing **213 students**, the program achieved a remarkable **4.1 out of 5-star average rating**, with 84 students awarding a perfect 5 stars and 89 students awarding 4 stars.

More telling than the numbers are the cognitive shifts reflected in direct student feedback. Students consistently highlight the connection between hands-on application and future-ready self-discovery:

- *"I really enjoyed learning new art skills, and then applying them to my own work..."*
- *"I enjoyed the seminar because it was very hands-on."*
- *"This camp helped me look into different topics I would not usually learn about. I will definitely use what I learned here in making decisions for my future career path."*

3. Market and Program Validation

The ultimate indicator of program quality is the willingness of participants to recommend it to their peers. Across all graduate courses and professional development programs, ConvergeEd boasts a **Net Promoter Score (NPS) ranging between 77 and 96**. In the landscape of professional education, any score above 50 is considered excellent; an NPS in the 80s and 90s represents world-class institutional loyalty and impact among the educators who have participated in its programs.

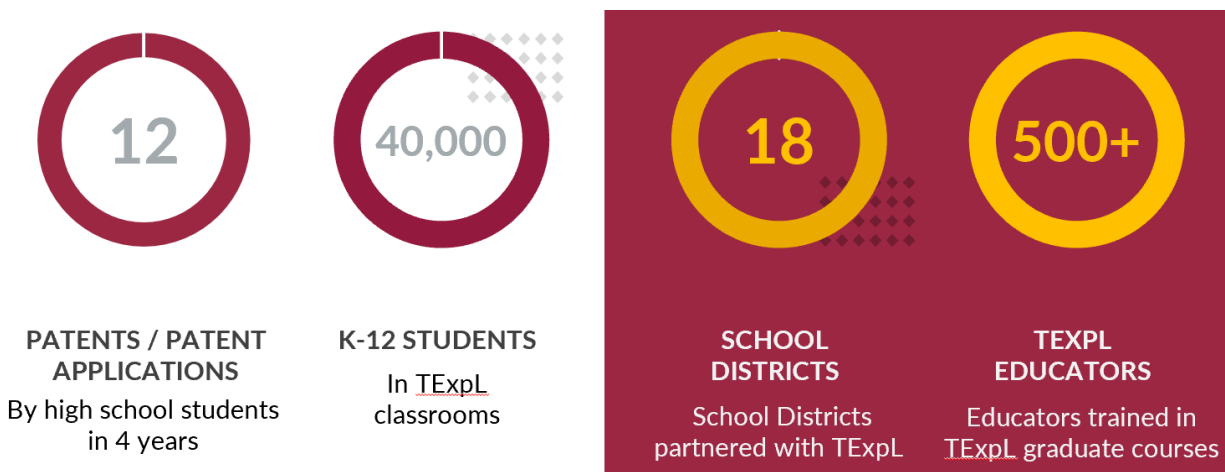
STRATEGIC IMPLEMENTATION & METHODOLOGY

The Path to Systemic Modernization

For superintendents, principals, chief academic officers, and policymakers, the transition away from legacy, information-scarce setups can feel daunting. TExpL is engineered not to disrupt institutional stability, but to elevate it. Implementation is scalable, allowing

districts to pilot programs within specific buildings or scale sequentially from professional development to full graduate certification.

By partnering with ConvergeEd, leadership teams receive a comprehensive roadmap that aligns professional development hours, graduate credits, and instructional coaching into a unified, high-yield strategy for teacher retention and student achievement.



Methodology Note

The quantitative data cited throughout this paper is derived from ongoing institutional research tracking over 500 educators across 18 school districts or LEAs. Statistical significance for the TSES and course survey data was determined using a two-tailed T-test, confirming that the growth in teacher efficacy and student engagement is directly attributable to TExpL methodologies rather than external variance.

Conclusion: Join the Educational Renaissance

When a 20-year veteran teacher declares that they are tired of the daily battle for engagement, it is a warning sign for the profession. But when that same veteran declares that TExpL allowed them to *"break down the classroom walls and bring a true renaissance"* to their teaching, it is a roadmap for the future.

Our teachers shouldn't have to fight an outdated classroom design to reach 21st-century minds. It is time to implement an instructional framework built for the modern world.

Ready to bring the TExpL Renaissance to your institution? Contact TExpL Institute at Alvernia University.

References

Teachers' Sense of Efficacy Scale (TSES) measures teachers' beliefs in their ability to influence student engagement, instructional strategies, and classroom management
Tschannen-Moran, M., & Hoy, A. (2001). *Teaching and Teacher Education*, 17(7), 783-805.
[https://doi.org/10.1016/S0742-051X\(01\)00036-1](https://doi.org/10.1016/S0742-051X(01)00036-1)